



Company : Santos

Well : Henry 2DW1 ST1

Interval : 792.00 - 1641.78 meters

Created : 07/Oct/2008 6:22:17 AM



INTEQ

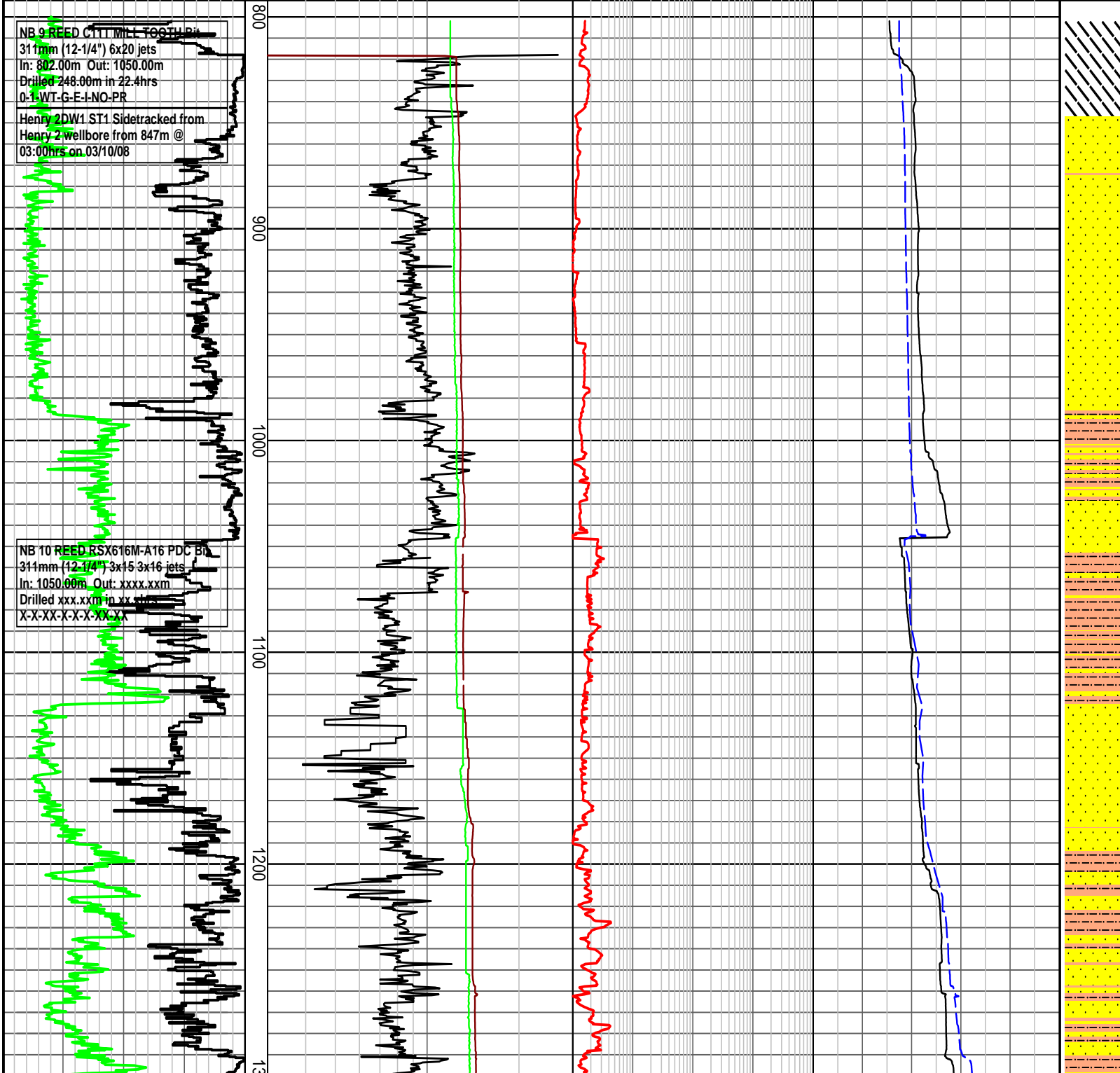
HENRY 2DW1 ST1 PRESSURE DATA PLOT

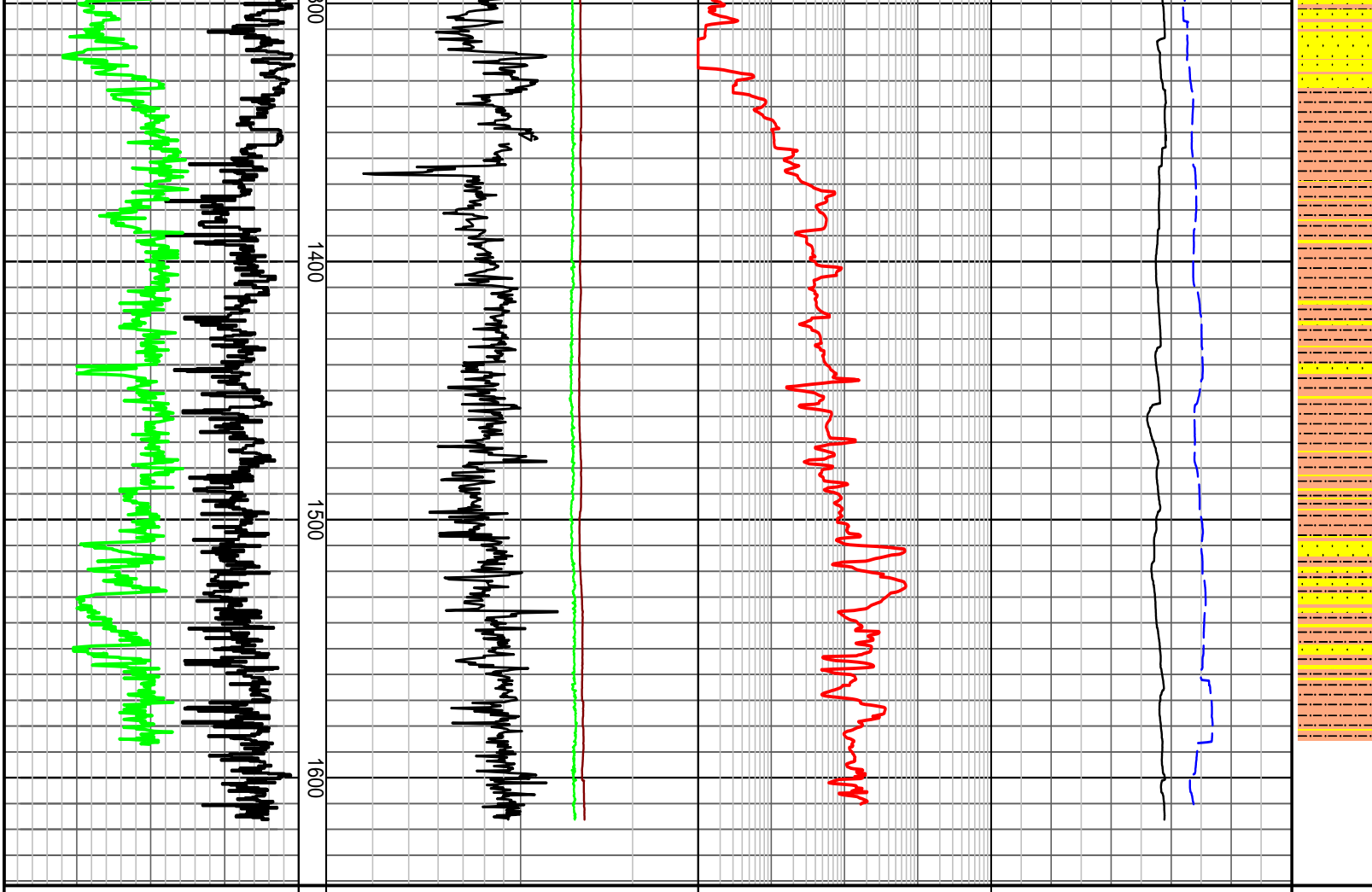
Rate Of Penetration ROP	Drilling Exponent DXC	Gas Data TOTAL GAS	Temperature Data MUD TEMP IN	INTERPRETED LITHOLOGY
200 150 100 50 m/hr Gamma Ray 50 100 150 200 API	Mud Weight In sg ECD at T.D. sg	1 10 100 1000 unit	20 40 60 80 100 degC MUD TEMP OUT 20 40 60 80 100 degC	

NB 9 REED C111 MILL TOOTH DR
 311mm (12-1/4") 6x20 jets
 In: 802.00m Out: 1050.00m
 Drilled 248.00m in 22.4hrs
 0-1-WT-G-E-I-NO-PR

Henry 2DW1 ST1 Sidetracked from
 Henry 2 wellbore from 847m @
 03:00hrs on 03/10/08

NB 10 REED RSX616M-A16 PDC B
 311mm (12-1/4") 3x15 3x16 jets
 In: 1050.00m Out: xxxx.xxm
 Drilled xxx.xxm in xx hrs
 X-X-XX-X-X-X-XX-XX





HENRY 2DW1 ST1 PRESSURE DATA PLOT

Rate Of Penetration ROP	Drilling Exponent DXC	Gas Data TOTAL GAS	Temperature Data MUD TEMP IN	INTERPRETED LITHOLOGY
200 150 100 50 m/hr Gamma Ray 50 100 150 200 API	3 Mud Weight In sg ECD at T.D. sg	1 10 100 1000 unit	20 40 60 80 100 degC MUD TEMP OUT 20 40 60 80 100 degC	
TVD meters 1:2500	3	3	3	